

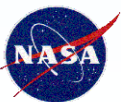
A-Train aerosol observations – preliminary comparisons with AeroCom models and pathways to observationally based all-sky estimates of direct radiative forcing

J. Redemann¹, J. Livingston², Y. Shinozuka³, M. Kacenelenbogen³,
P. Russell¹, S. LeBlanc⁴, M. Vaughan⁵, R. Ferrare⁵, C. Hostetler⁵,
R. Rogers⁵, S. Burton⁵, O. Torres⁶, L. Remer⁷, P. Stier⁸, N. Schutgens⁸

NASA Ames – SRI – BAERI – ORAU – NASA Langley – NASA Goddard – UMBC – Univ of Oxford

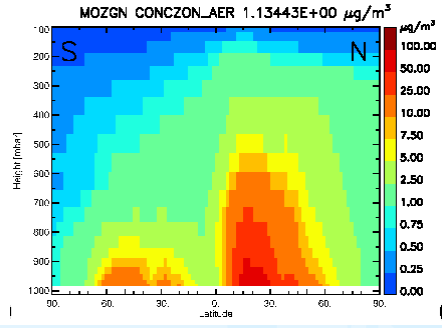
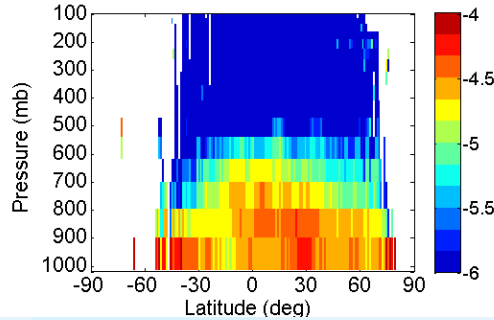
<http://geo.arc.nasa.gov/sgg/AATS-website/>

email: Jens.Redemann-1@nasa.gov



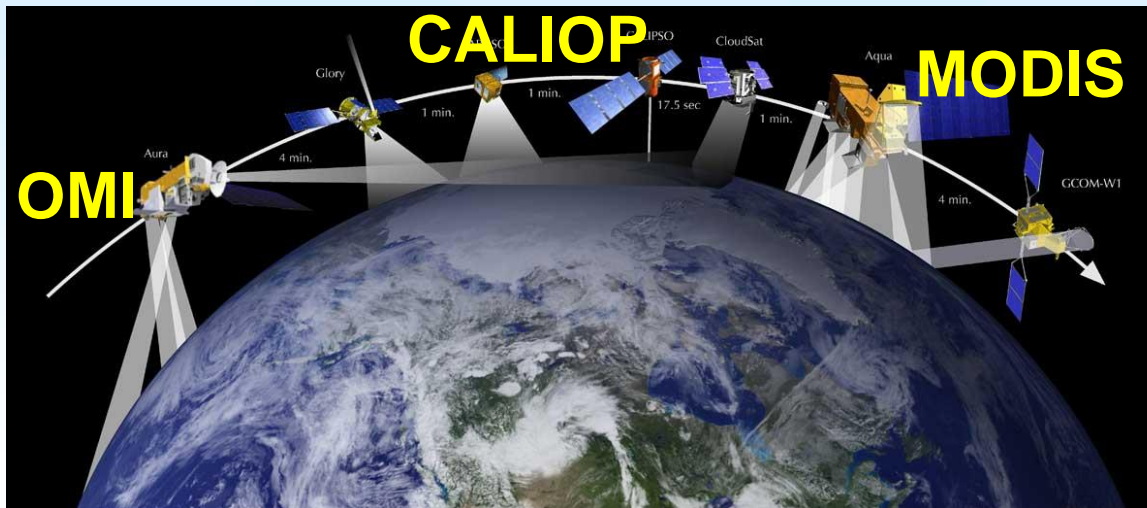
Goals and Motivation

log₁₀(Aer Ext) [m⁻¹]: 2007annual land + ocean



Goal: To use A-Train aerosol obs to constrain aerosol radiative properties to calculate observationally-based $\Delta F_{\text{aerosol}}(z)$ and its uncertainty

- Goals & Motivation
- Approach
- Philosophy
- Results
 - AOD & SSA distributions
 - SSA comparison with AERONET
 - Comparisons of DARF to IPCC 2007
 - Comparisons to AeroCom Phase 2
 - Global pdf's of SSA
 - Aerosol type classification
 - Conclusions



Approach

Constraints/Input:

- MODIS AOD (550, 1240 nm) \pm (0.03+5%)
- OMI AAOD (388 nm) \pm (0.05+30%)
- CALIPSO ext (532, 1064 nm) + δ_{ext}
- CALIPSO back (532 nm) \pm (0.1 Mm⁻¹sr⁻¹+30%)

Aerosol models:

7 fine and 3 coarse mode models and refractive indices for bi-modal log-normal size distribution \rightarrow 100 combinations

Free parameters: N_{fine} , N_{coarse}

Rtx code

Target:

$$\Delta F_{\text{aerosol}}(z) + \delta \Delta F_{\text{aerosol}}(z)$$

Comparison:

AERONET AOD, SSA, g
Airborne test bed data

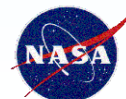
Retrieval:

$$\begin{aligned} &\text{ext}(\lambda, z) + \delta_{\text{ext}} \\ &\text{SSA}(\lambda, z) + \delta_{\text{SSA}} \\ &g(\lambda, z) + \delta g \end{aligned}$$

Comparison:

CERES F_{clear}
Airborne F_{clear}

- \rightarrow Goals & Motivation
- \rightarrow **Approach**
- \rightarrow Philosophy
- \rightarrow Results
- \rightarrow AOD & SSA distributions
- \rightarrow SSA comparison with AERONET
- \rightarrow Comparisons of DARF to IPCC 2007
- \rightarrow Comparisons to AeroCom Phase 2
- \rightarrow Global pdf's of SSA
- \rightarrow Aerosol type classification
- \rightarrow Conclusions

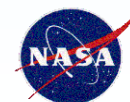


Philosophy and retrieval choices

- 1) Use instantaneously collocated L2 data from MODIS, OMI, CALIOP
- 2) Check whether collocated data from any given sensor is consistent with the pdf of the sensor's global data set
- 3) Observe satellite data quality flags
- 4) Use aerosol models that are consistent with in situ data sets from various field campaigns
- 5) Different choices for different locales:

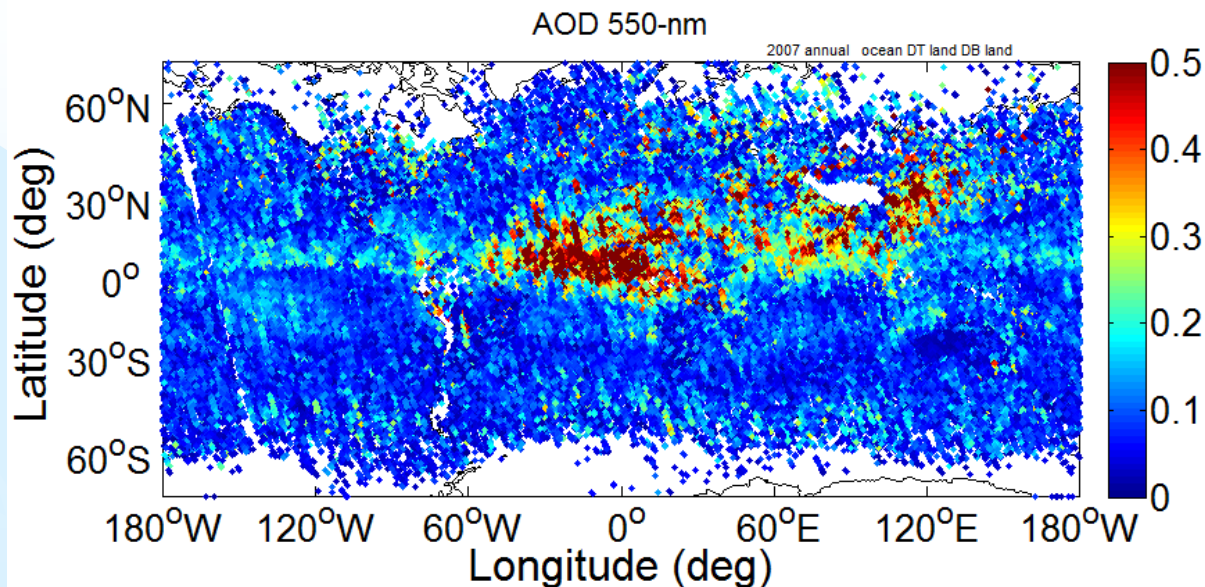
Locale → Data ↓	Land - Dark target	Land - Enhanced Deep blue	Ocean
MODIS AOD 550nm 1240nm	Corr._O._D._Land (QA_Land=3) 550 nm provided 1240 nm extrapolated from 470, 550, 660 nm	D._B._Spec._A._O._D._ _Land (QA_Flag=3) 550 nm provided 1240 nm extrapolated from 412, 470, 660nm	Eff._O._D._Avg_Ocean (QA_Ocean=1,2,3) 550 nm provided 1240 nm provided
OMI AAOD 388 nm	OMAERUV A.S.S.A.VsHeight (QA=0) SSA 388 nm provided + MODIS AOD 388 nm extrapolated from 470, 550, 660 nm	OMAERUV A.S.S.A.VsHeight (QA=0) SSA 388 nm provided + MODIS AOD 388 nm extrapolated from 412, 470, 660nm	OMAERO S.S.A.MW (QA=0) SSA 388nm provided + MODIS AOD 388nm extrapolated from seven bands 470- 2120
CALIOP A. backscat 532 nm	CALIOP integrated backscatter screening according to Redemann et al. 2012 (CALIOP zmax-zmin)		

- Goals & Motivation
- Approach
- **Philosophy**
- Results
 - AOD & SSA distributions
 - SSA comparison with AERONET
 - Comparisons of DARF to IPCC 2007
 - Comparisons to AeroCom Phase 2
 - Global pdf's of SSA
 - Aerosol type classification
 - Conclusions

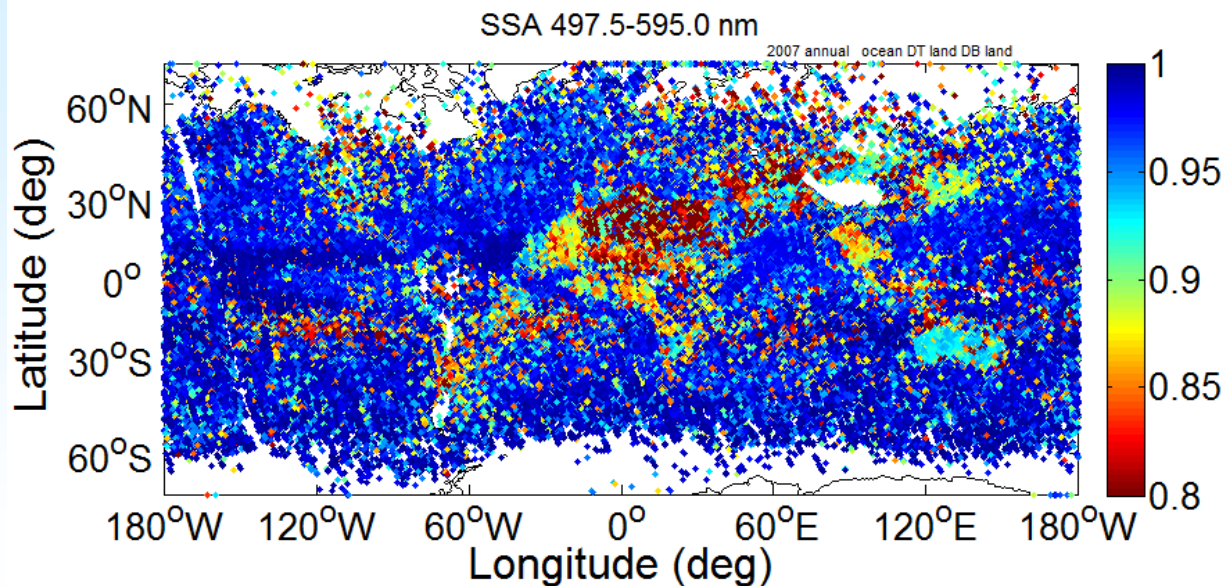


Global distribution of MOC retrievals 2007

AOD
~550nm



SSA
~550nm

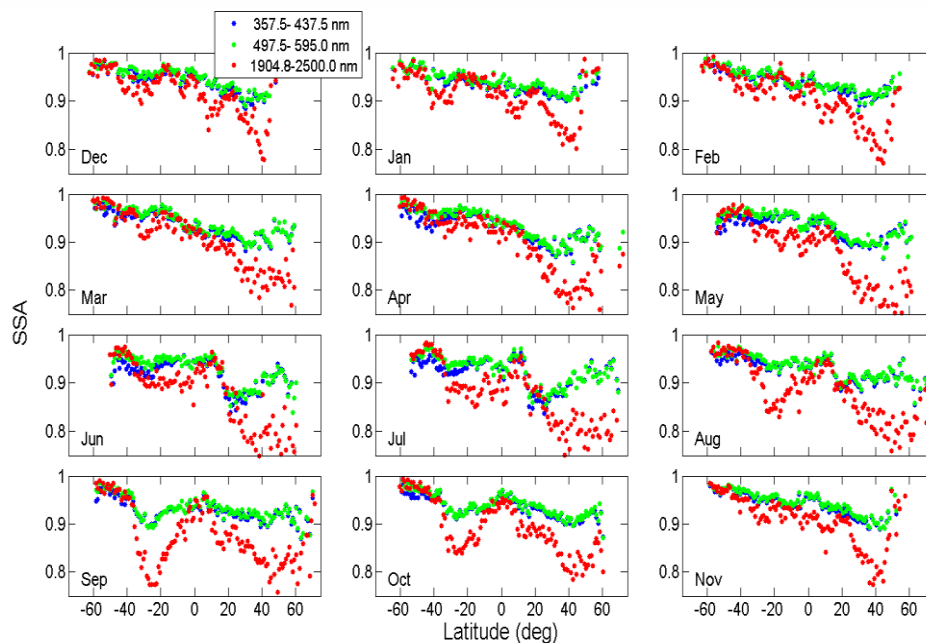


- Goals & Motivation
- Approach
- Philosophy
- Results
 - AOD & SSA distributions
 - SSA comparison with AERONET
 - Comparisons of DARF to IPCC 2007
 - Comparisons to AeroCom Phase 2
 - Global pdf's of SSA
 - Aerosol type classification
 - Conclusions

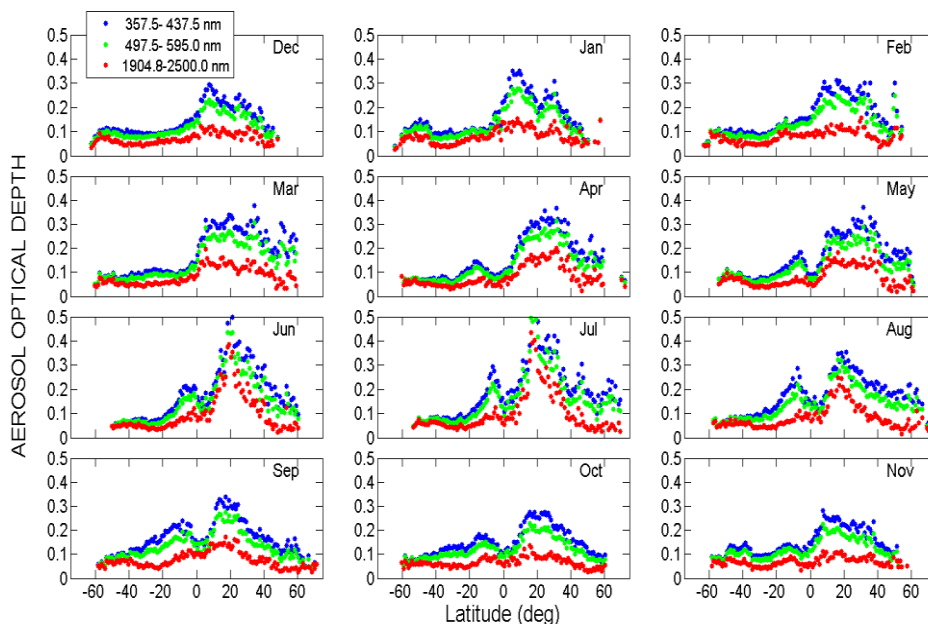
AOD and SSA distribution

- Goals & Motivation
- Approach
- Philosophy
- Results
 - **AOD & SSA distributions**
 - SSA comparison with AERONET
 - Comparisons of DARF to IPCC 2007
 - Comparisons to AeroCom Phase 2
 - Global pdf's of SSA
 - Aerosol type classification
 - Conclusions

SSA
400nm
550nm
2200nm



AOD
400nm
550nm
2200nm

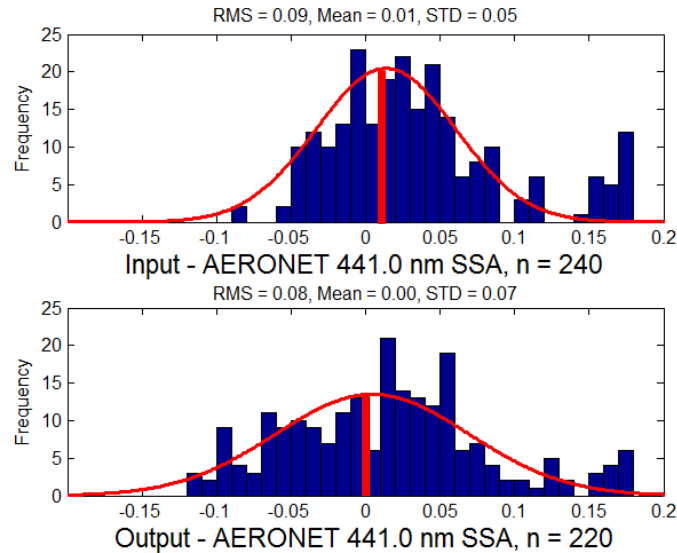


SSA comparisons to AERONET – Ocean & Land

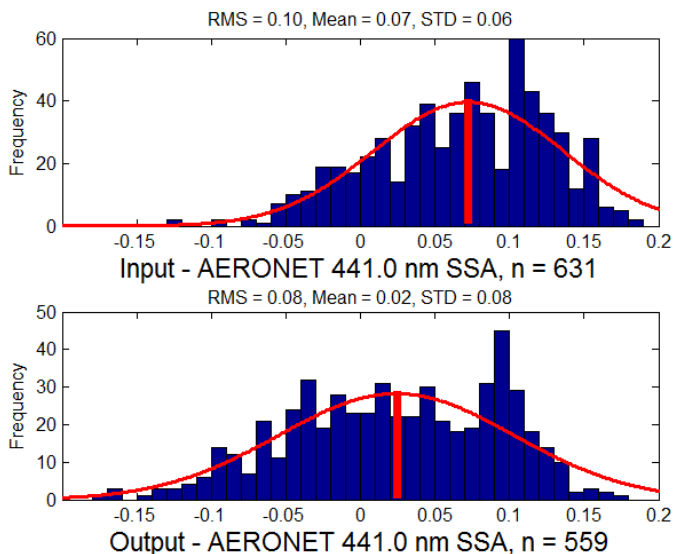
- Goals & Motivation
- Approach
- Philosophy
- Results
 - AOD & SSA distributions
 - **SSA comparison with AERONET**
 - Comparisons of DARF to IPCC 2007
 - Comparisons to AeroCom Phase 2
 - Global pdf's of SSA
 - Aerosol type classification
 - Conclusions

Positive bias in input SSA data is removed in MOC retrieval

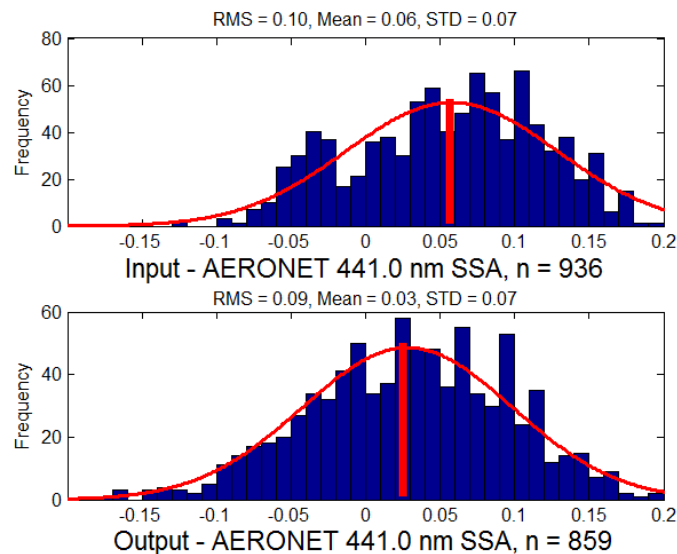
MODIS ocean + OMAERO



MODIS land DT + OMAERUV



MODIS land DB + OMAERUV

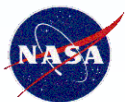


Comparisons of $\Delta F_{\text{aerosol}}$ to previous results

Seasonal clear-sky $\Delta F_{\text{aerosol}}$ results at TOA from models and observations [W/m^2] after CCSP-2009, adapted from Yu et al. 2006.

- Goals & Motivation
- Approach
- Philosophy
- Results
 - AOD & SSA distributions
 - SSA comparison with AERONET
 - Comparisons of DARF to IPCC 2007
 - Comparisons to AeroCom Phase 2
 - Global pdf's of SSA
 - Aerosol type classification
 - Conclusions

Products	DJF		MAM		JJA		SON		ANN	
	TOA	SFC	TOA	SFC	TOA	SFC	TOA	SFC	TOA	SFC
Ocean										
Observations – Median	-5.5	-8.1	-5.7	-9.3	-5.5	-9.5	-5.4	-8.8	-5.5	-8.8
Our study – preliminary	-4.3	-6.6	-4.2	-7.0	-3.7	-6.4	-4.3	-6.6	-4.2	-6.7
Observations – error	0.23	0.56	0.2	0.85	0.29	0.94	0.26	0.78	0.21	0.67
Models (5) – Median	-3.3	-4.1	-3.5	-4.6	-3.5	-4.9	-3.8	-5.4	-3.5	-4.8
Models – error	0.61	0.66	0.66	0.92	0.67	0.91	0.68	0.81	0.64	0.8
Models/Observations	0.6	0.51	0.61	0.5	0.64	0.52	0.7	0.61	0.64	0.55
Land										
Observations – Median	-3.7	-8.1	-5.1	-13	-5.8	-14.8	-4.7	-10.8	-4.9	-11.7
Our study – preliminary	-1.4	-6.9	-2.0	-10.9	-0.9	-13.0	-2.0	-8.4	-2.1	-10.4
Observations - error	0.17	0.49	0.26	0.74	0.31	0.85	0.27	0.75	0.26	0.7
Models (5) - Median	-1.6	-5.4	-3.2	-7.9	-3.6	-9.3	-2.5	-6.7	-2.8	-7.2
Models - error	0.42	0.51	0.65	1.22	0.8	1.37	0.62	0.79	0.59	0.93
Models/Observations	0.43	0.67	0.63	0.61	0.62	0.63	0.53	0.62	0.58	0.62

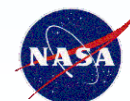


Comparisons of $\Delta F_{\text{aerosol}}$ to previous results

Seasonal clear-sky $\Delta F_{\text{aerosol}}$ results at the surface from models and observations [W/m^2] after CCSP-2009, adapted from Yu et al. 2006.

Products	DJF		MAM		JJA		SON		ANN	
	TOA	SFC	TOA	SFC	TOA	SFC	TOA	SFC	TOA	SFC
Ocean										
Observations – Median	-5.5	-8.1	-5.7	-9.3	-5.5	-9.5	-5.4	-8.8	-5.5	-8.8
Our study – preliminary	-4.3	-6.6	-4.2	-7.0	-3.7	-6.4	-4.3	-6.6	-4.2	-6.7
Observations – error	0.23	0.56	0.2	0.85	0.29	0.94	0.26	0.78	0.21	0.67
Models (5) – Median	-3.3	-4.1	-3.5	-4.6	-3.5	-4.9	-3.8	-5.4	-3.5	-4.8
Models – error	0.61	0.66	0.66	0.92	0.67	0.91	0.68	0.81	0.64	0.8
Models/Observations	0.6	0.51	0.61	0.5	0.64	0.52	0.7	0.61	0.64	0.55
Land										
Observations – Median	-3.7	-8.1	-5.1	-13	-5.8	-14.8	-4.7	-10.8	-4.9	-11.7
Our study – preliminary	-1.4	-6.9	-2.0	-10.9	-0.9	-13.0	-2.0	-8.4	-2.1	-10.4
Observations - error	0.17	0.49	0.26	0.74	0.31	0.85	0.27	0.75	0.26	0.7
Models (5) - Median	-1.6	-5.4	-3.2	-7.9	-3.6	-9.3	-2.5	-6.7	-2.8	-7.2
Models - error	0.42	0.51	0.65	1.22	0.8	1.37	0.62	0.79	0.59	0.93
Models/Observations	0.43	0.67	0.63	0.61	0.62	0.63	0.53	0.62	0.58	0.62

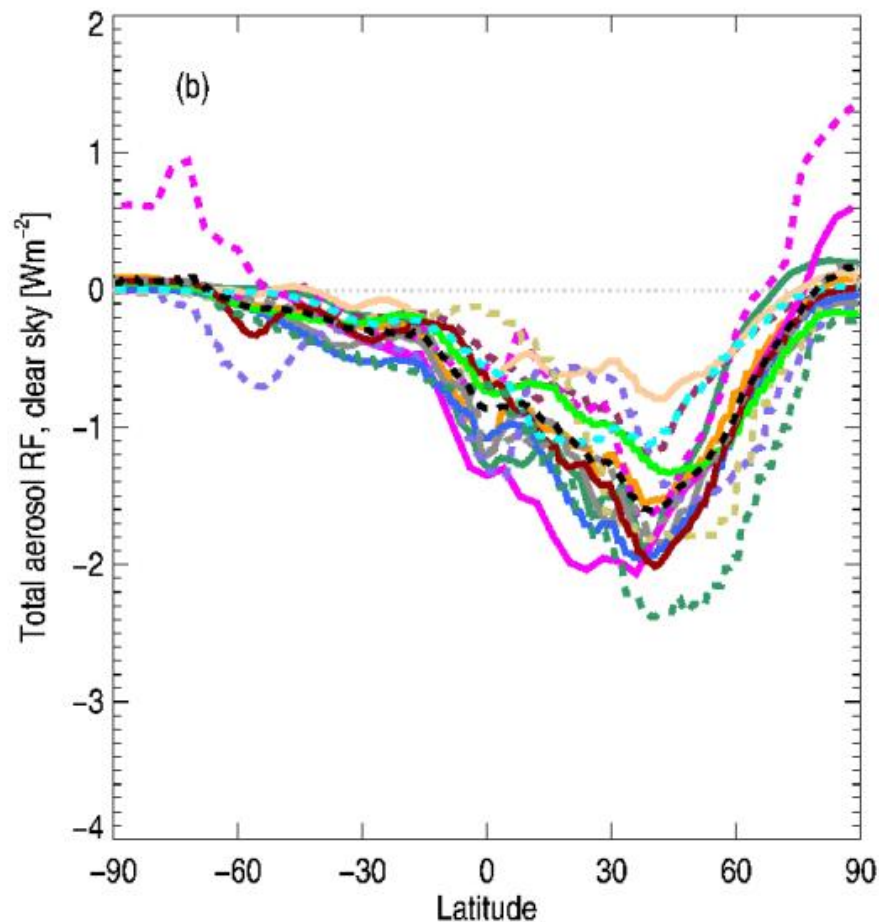
- Goals & Motivation
- Approach
- Philosophy
- Results
 - AOD & SSA distributions
 - SSA comparison with AERONET
 - Comparisons of DARF to IPCC 2007
 - Comparisons to AeroCom Phase 2
 - Global pdf's of SSA
 - Aerosol type classification
 - Conclusions



Comparisons of AOD, SSA, $\Delta F_{\text{aerosol}}(\text{TOA})$ and $\Delta F_{\text{aerosol}}(\text{SFC})$ to four* AeroCom Phase II models

- Goals & Motivation
- Approach
- Philosophy
- Results
 - AOD & SSA distributions
 - SSA comparison with AERONET
 - Comparisons of DARF to IPCC 2007
 - Comparisons to AeroCom Phase 2
 - Global pdf's of SSA
 - Aerosol type classification
 - Conclusions

Anthropogenic clear-sky aerosol forcing, AeroCom Phase II

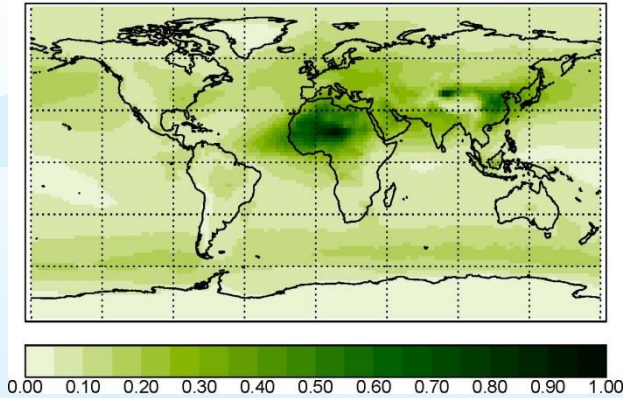


Myhre et al., 2013

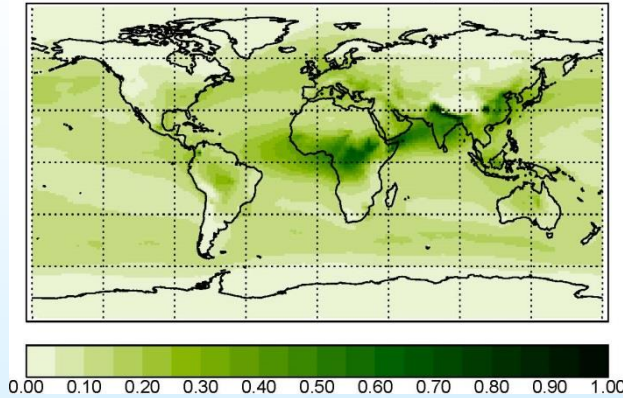
* Subset of AeroCom Phase 2 models with SW fluxes and no-aerosol runs stored

Maps of AOD – compared to 4 AeroCom Ph II models

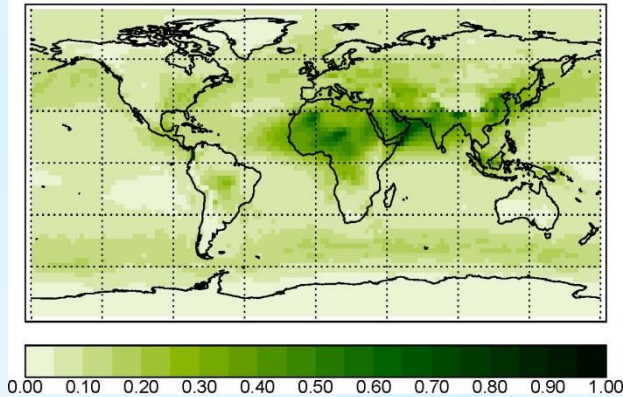
GMI-MERRA AOT; 0.13 (0.14)



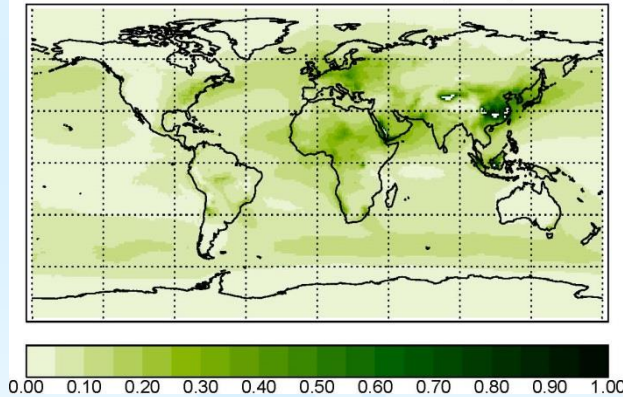
HadGEM2 AOT; 0.13 (0.16)



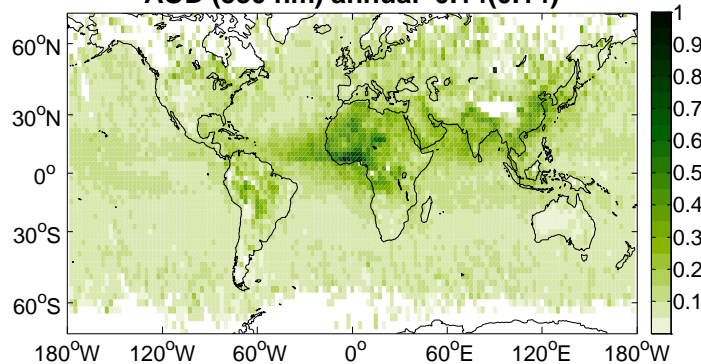
OsloCTM2 AOT; 0.12 (0.14)



SPRINTARS AOT; 0.09 (0.10)



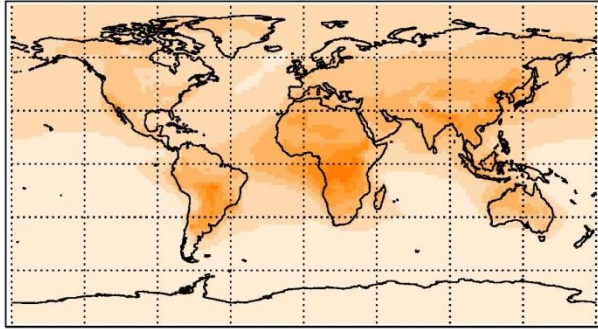
AOD (550 nm) annual 0.14(0.14)



- Goals & Motivation
- Approach
- Philosophy
- Results
 - AOD & SSA distributions
 - SSA comparison with AERONET
 - Comparisons of DARF to IPCC 2007
 - Comparisons to AeroCom Phase 2
 - Global pdf's of SSA
 - Aerosol type classification
- Conclusions

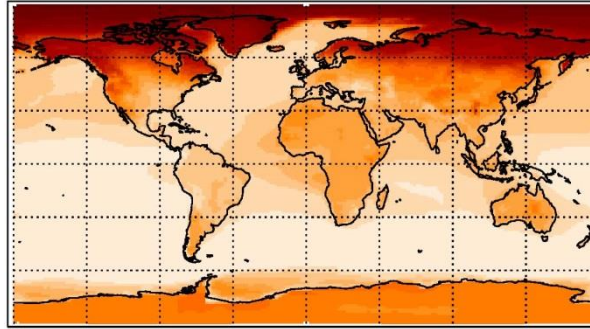
Maps of SSA – compared to 4 AeroCom Ph II models

GMI-MERRA SSA; 0.98 (0.98)



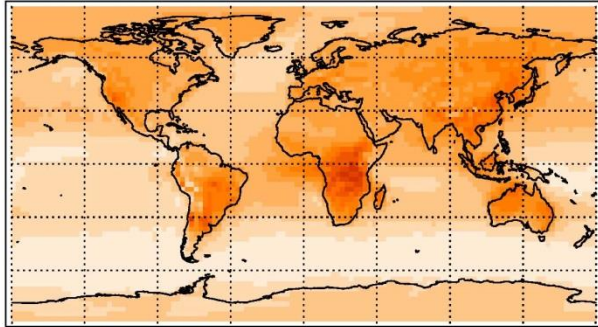
0.75 0.77 0.79 0.81 0.83 0.85 0.87 0.89 0.91 0.93 0.95 0.97 0.99

HadGEM2 SSA; 0.97 (0.98)



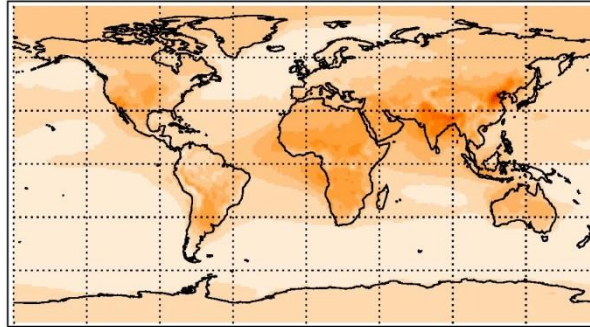
0.75 0.77 0.79 0.81 0.83 0.85 0.87 0.89 0.91 0.93 0.95 0.97 0.99

OsloCTM2 SSA; 0.97 (0.97)



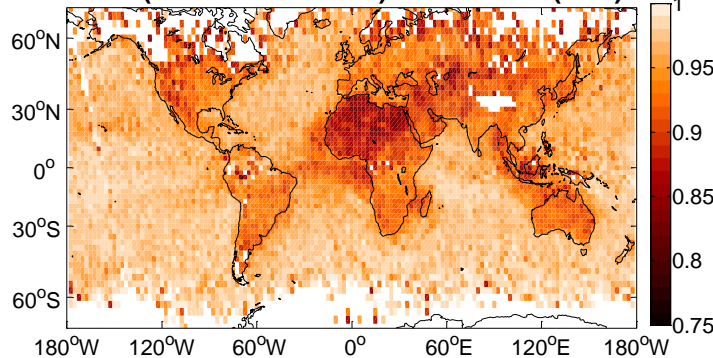
0.75 0.77 0.79 0.81 0.83 0.85 0.87 0.89 0.91 0.93 0.95 0.97 0.99

SPRINTARS SSA; 0.98 (0.98)



0.75 0.77 0.79 0.81 0.83 0.85 0.87 0.89 0.91 0.93 0.95 0.97 0.99

SSA (497.5 to 595.0-nm) annual 0.95(0.95)

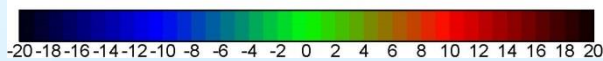
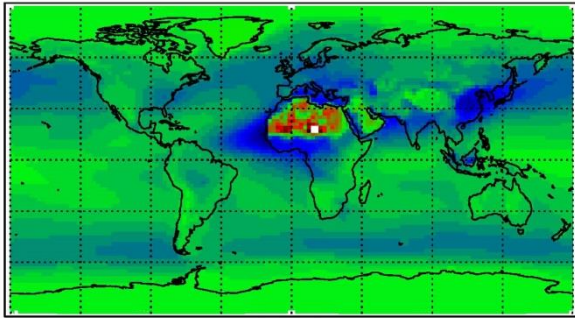


- Goals & Motivation
- Approach
- Philosophy
- Results
 - AOD & SSA distributions
 - SSA comparison with AERONET
 - Comparisons of DARF to IPCC 2007
 - Comparisons to AeroCom Phase 2
 - Global pdf's of SSA
 - Aerosol type classification
 - Conclusions

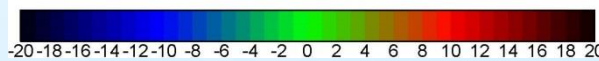
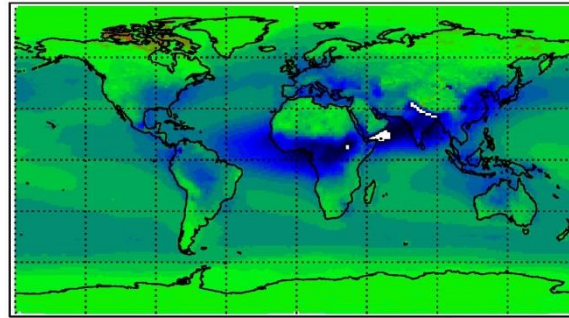
Maps of TOA clear sky $\Delta F_{\text{aerosol}}$

- Goals & Motivation
- Approach
- Philosophy
- Results
 - AOD & SSA distributions
 - SSA comparison with AERONET
 - Comparisons of DARF to IPCC 2007
 - Comparisons to AeroCom Phase 2
 - Global pdf's of SSA
 - Aerosol type classification
 - Conclusions

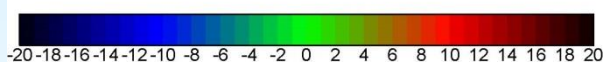
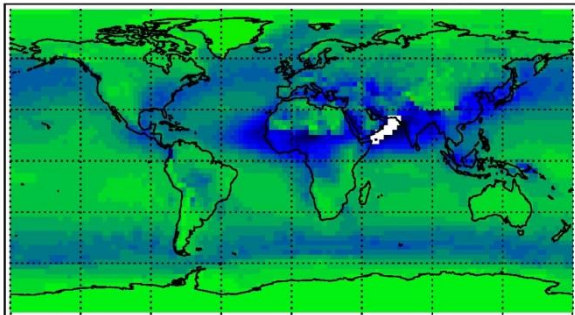
GMI-MERRA SW TOA; -3.4 (-3.5) Wm^{-2}



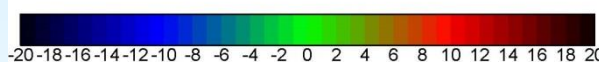
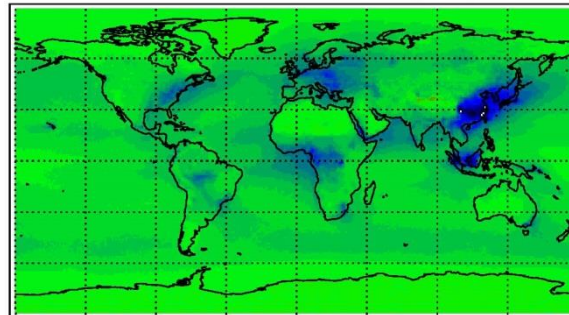
HadGEM2 SW TOA; -4.4 (-5.2) Wm^{-2}



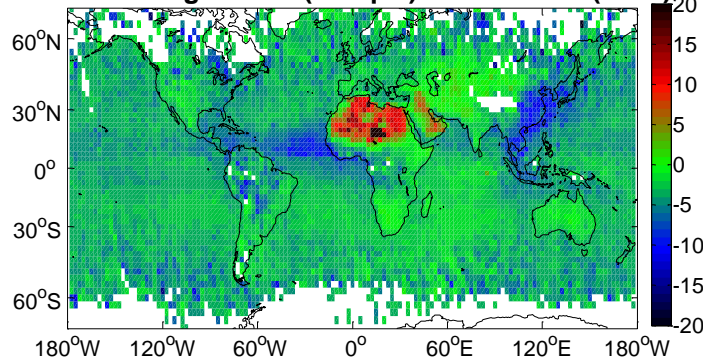
OsloCTM2 SW TOA; -4.3 (-4.6) Wm^{-2}



SPRINTARS SW TOA; -2.2 (-2.5) Wm^{-2}

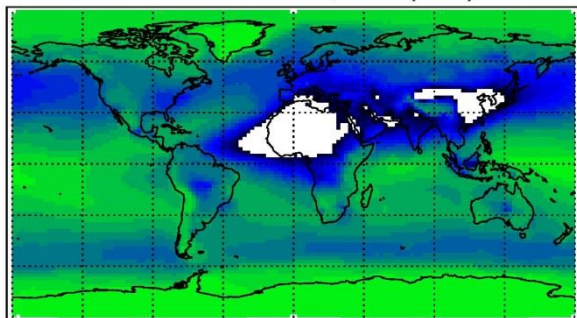


24-hr forcing at TOA (W/sq m) annual -3.65 (-3.20)



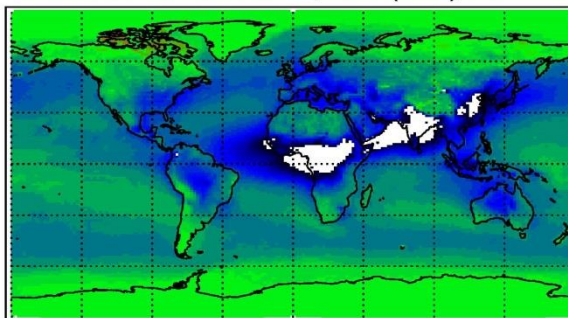
Maps of SFC clear sky $\Delta F_{\text{aerosol}}$

GMI-MERRA SW SFC; -6.5 (-7.3) Wm^{-2}



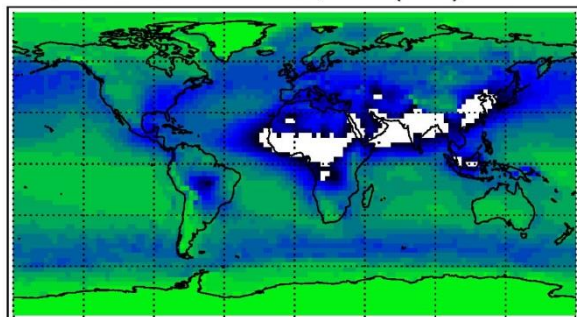
-20 -18 -16 -14 -12 -10 -8 -6 -4 -2 0 2 4 6 8 10 12 14 16 18 20

HadGEM2 SW SFC; -6.0 (-7.1) Wm^{-2}



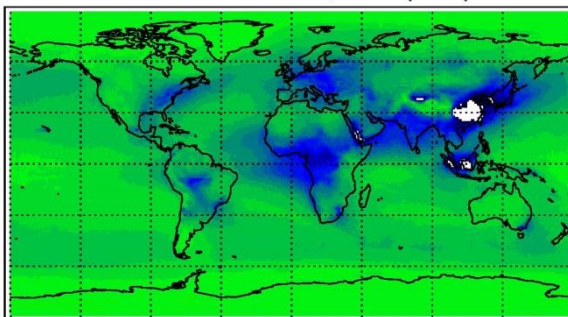
-20 -18 -16 -14 -12 -10 -8 -6 -4 -2 0 2 4 6 8 10 12 14 16 18 20

OsloCTM2 SW SFC; -6.7 (-7.5) Wm^{-2}



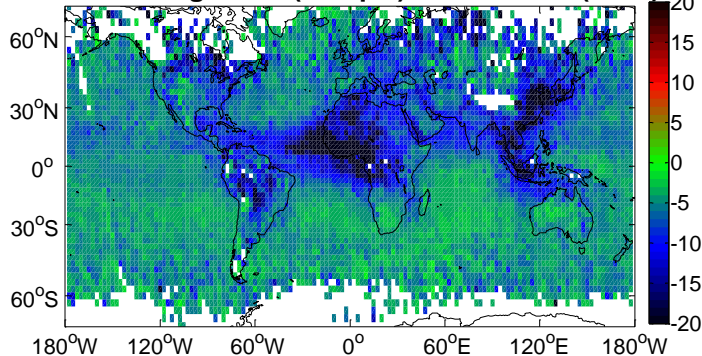
-20 -18 -16 -14 -12 -10 -8 -6 -4 -2 0 2 4 6 8 10 12 14 16 18 20

SPRINTARS SW SFC; -3.4 (-3.9) Wm^{-2}



-20 -18 -16 -14 -12 -10 -8 -6 -4 -2 0 2 4 6 8 10 12 14 16 18 20

24-hr forcing at sfc (W/sq m) annual -7.68(-7.19)

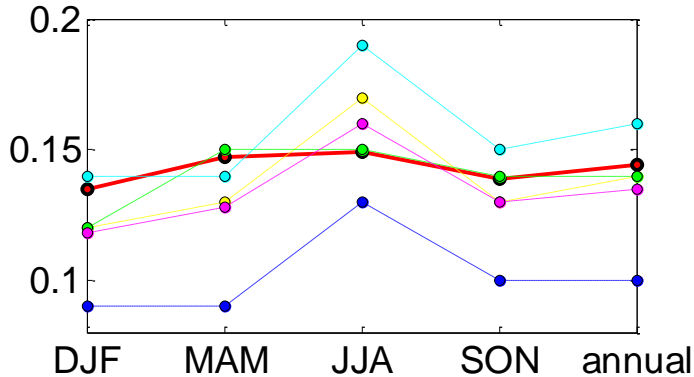


- Goals & Motivation
- Approach
- Philosophy
- Results
 - AOD & SSA distributions
 - SSA comparison with AERONET
 - Comparisons of DARF to IPCC 2007
 - Comparisons to AeroCom Phase 2
 - Global pdf's of SSA
 - Aerosol type classification
 - Conclusions

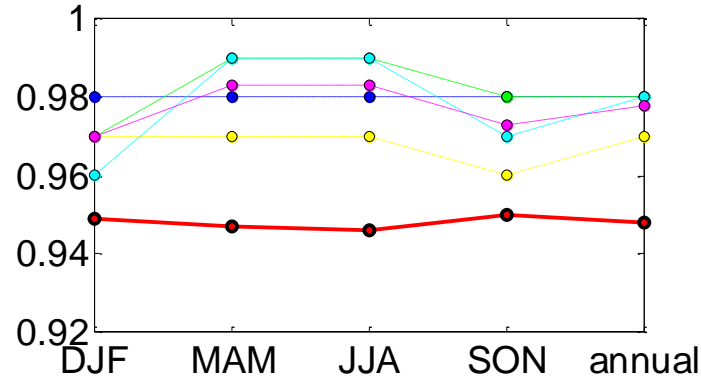
Comparisons of AOD, SSA, $\Delta F_{\text{aerosol}}(\text{TOA})$ and $\Delta F_{\text{aerosol}}(\text{SFC})$ to 4 AeroCom Phase II models

- Goals & Motivation
- Approach
- Philosophy
- Results
 - AOD & SSA distributions
 - SSA comparison with AERONET
 - Comparisons of DARF to IPCC 2007
 - Comparisons to AeroCom Phase 2
 - Global pdf's of SSA
 - Aerosol type classification
 - Conclusions

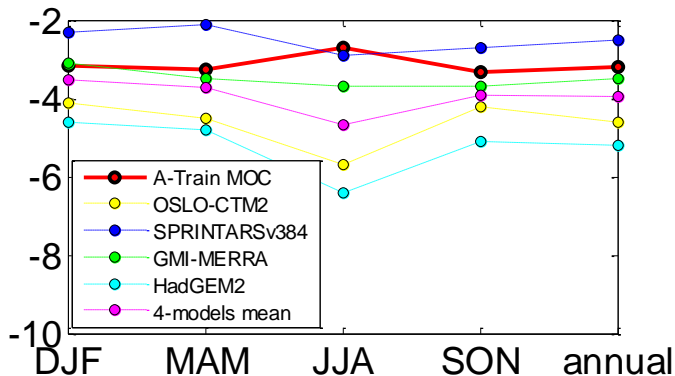
AOD550



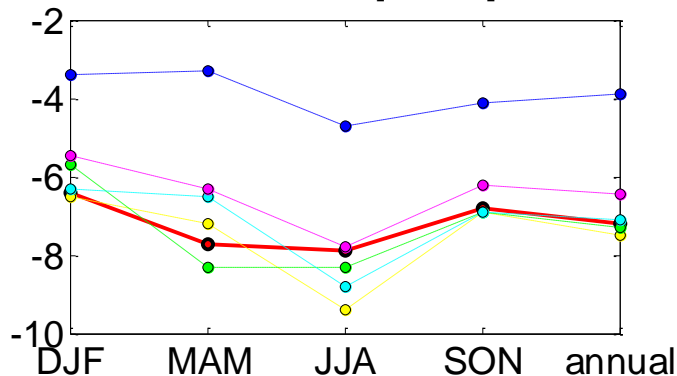
SSA550



dF TOA [Wm^{-2}]

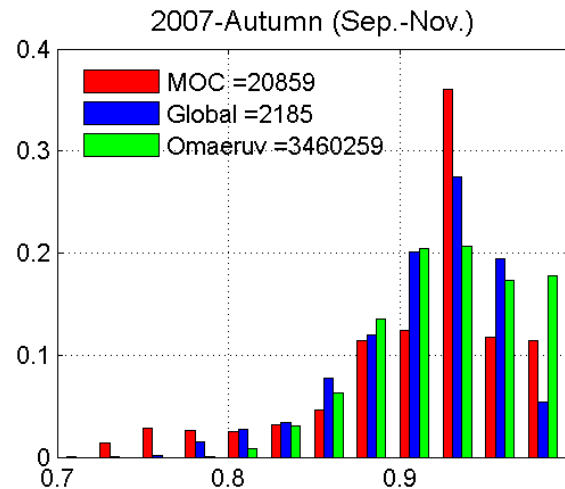
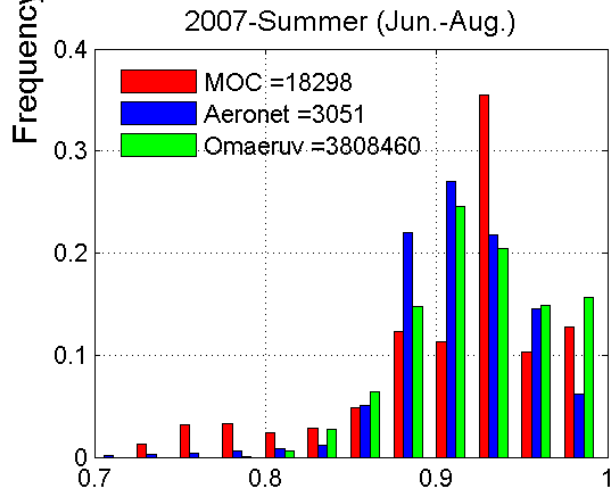
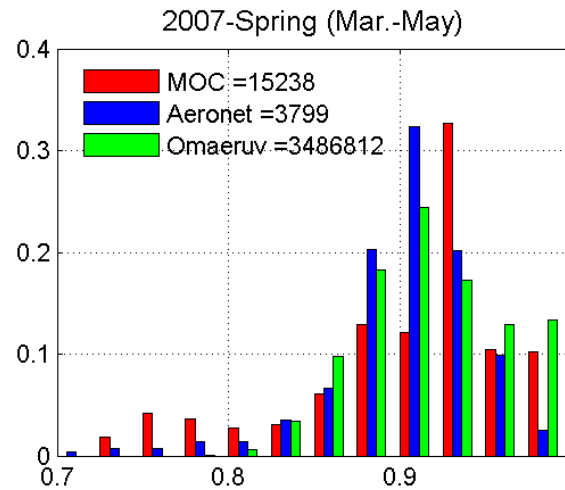
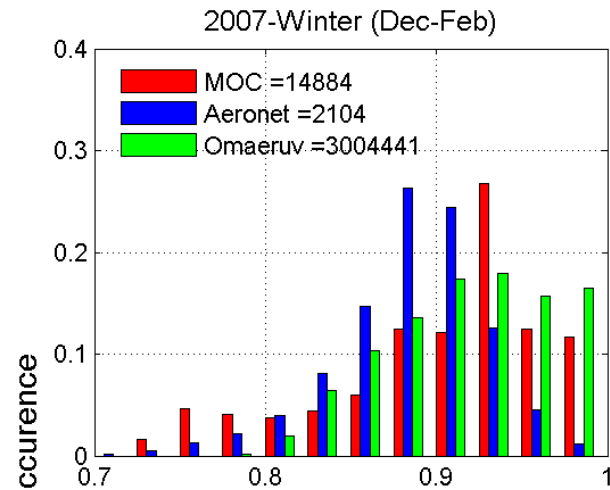


dF surface [Wm^{-2}]

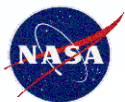


Comparisons of SSA – MOC vs AERONET vs OMAERUV: OMAERUV has values ~1, AERONET peaks near 0.925

- Goals & Motivation
- Approach
- Philosophy
- Results
 - AOD & SSA distributions
 - SSA comparison with AERONET
 - Comparisons of DARF to IPCC 2007
 - Comparisons to AeroCom Phase 2
 - Global pdf's of SSA
 - Aerosol type classification
 - Conclusions

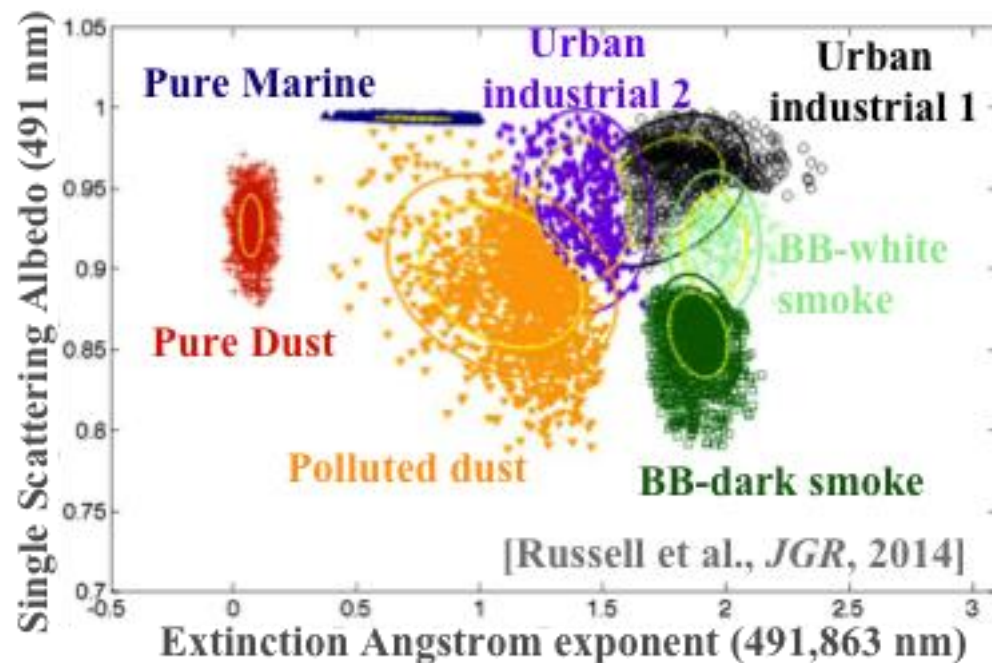


SSA land (MOC:438-498nm, Aeronet:441nm, Omaeruv:388nm (ssa500~=1))



Aerosol type classification using MOC results

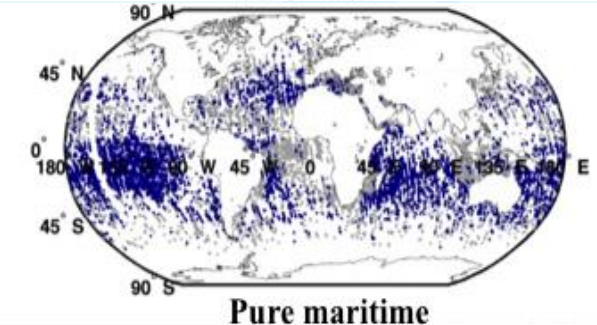
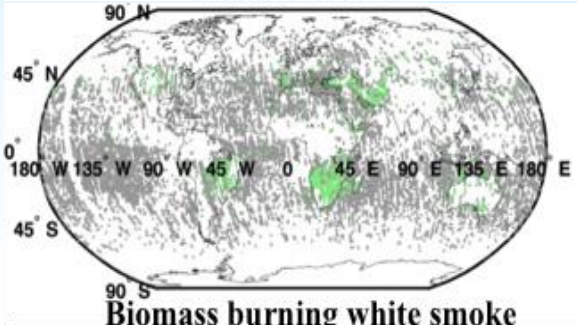
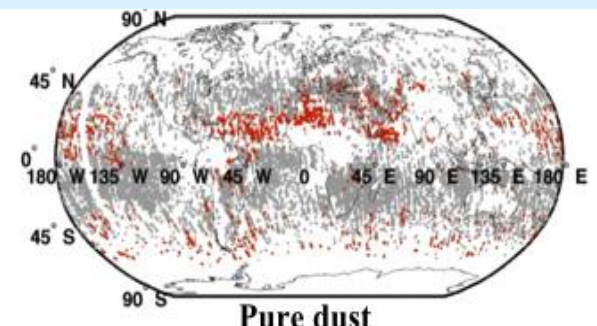
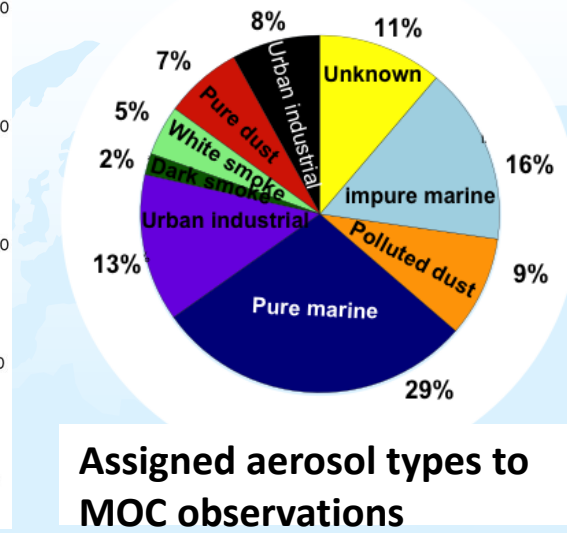
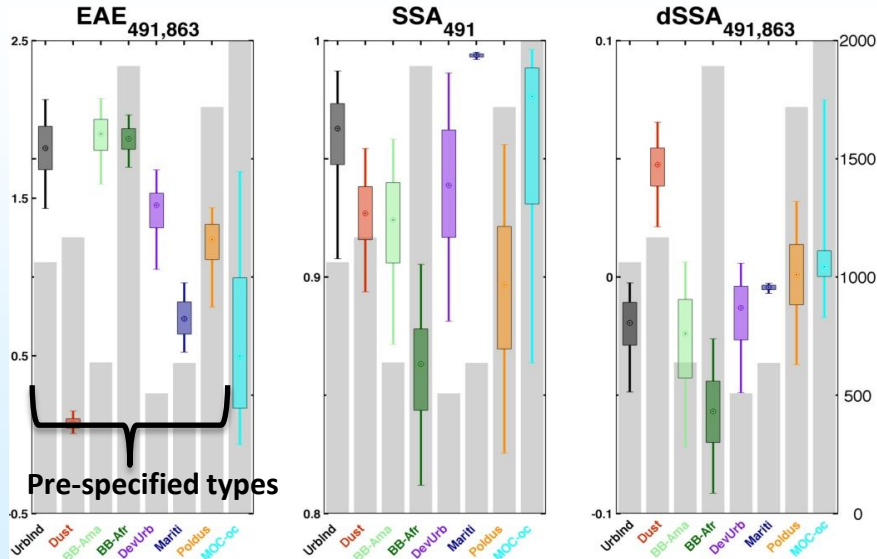
1. Define **reference aerosol types (or clusters)** using AERONET L2 V2 sky retrievals with numerous filters to “purify” different types
2. Define additional type impure marine (i.e. small AOD & coarse particle [Sayer et al., 2012]); eliminate impure marine from non-marine types
3. Define **distance DM** [Mahalanobis, 1936] from each MOC observation to each of the 7 clusters (as function of center, width and tilt of each cluster) in three MOC parameter-space: **EAE491-863, SSA491, dSSA863,491** (with standard deviations)
4. **Assign each MOC observation to the type (or cluster) from which it has least DM**



- Goals & Motivation
- Approach
- Philosophy
- **Results**
 - AOD & SSA distributions
 - SSA comparison with AERONET
 - Comparisons of DARF to IPCC 2007
 - Comparisons to AeroCom Phase 2
 - Global pdf's of SSA
 - **Aerosol type classification**
 - Conclusions

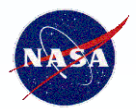
Aerosol type classification using MOC results

- Goals & Motivation
- Approach
- Philosophy
- Results
 - AOD & SSA distributions
 - SSA comparison with AERONET
 - Comparisons of DARF to IPCC 2007
 - Comparisons to AeroCom Phase 2
 - Global pdf's of SSA
 - **Aerosol type classification**
 - Conclusions



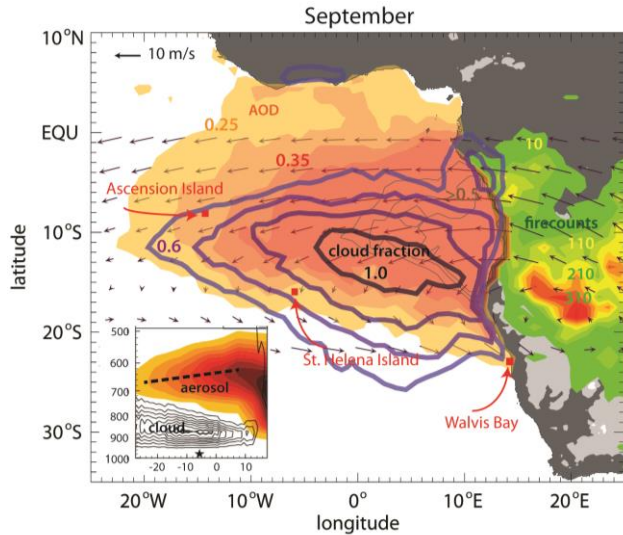
In grey, MOC observations with known aerosol type

Preliminary results



ORACLES (ObseRvations of Aerosols above CLouds and their intEractionS)

Earth-Venture-2 proposal Redemann/Wood/Zuidema

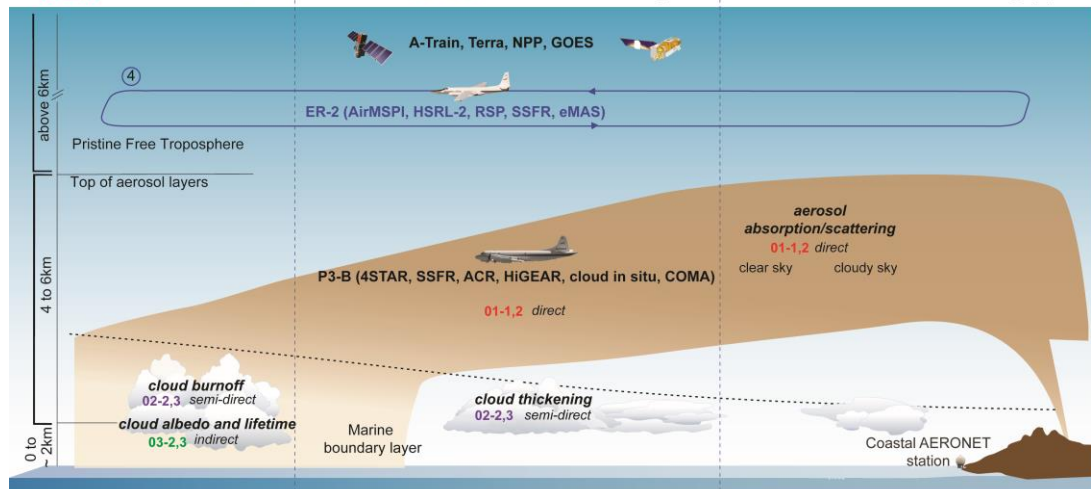


- Radio-polarimetric and in situ observations of radiation, aerosol & cloud microphysics above/below aerosol and clouds.
- 3 campaigns with P-3 (2016-2018), 1 with ER-2 (prob. 2016)
- Coordinated with CLARIFY and ONFIRE
- Involves 5 NASA centers, 8 universities
- Includes LES and WRF-Chem modeling and features flight strategies to facilitate easy comparisons to global models
- Establishes 2 new AERONET sites (St. Helena & Angola)
- Selection in late 2014

02-2,3 semi-direct + ?
03-2,3 indirect -

01-1,2 direct + or -
02-2,3 semi-direct - ?

01-1,2 direct - TOA warming (+)
or cooling (-)



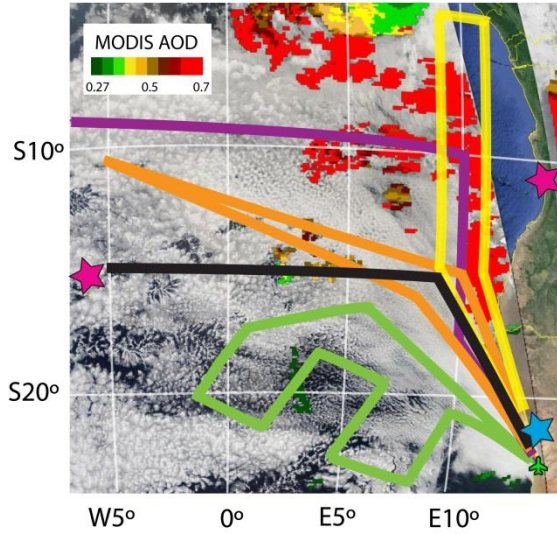
Instruments - NASA ER-2:
AirMSPI, HSRL-2, RSP, eMAS



Instruments - NASA P-3B:
4STAR, SSFR, HiGEAR, radar, cloud in situ

ORACLES (ObseRvations of Aerosols above CLouds and their intEractionS)

Earth-Venture-2 proposal Redemann/Wood/Zuidema



- Radio-polarimetric and in situ observations of radiation, aerosol & cloud microphysics above/below aerosol and clouds.
- 3 campaigns with P-3 (2016-2018), 1 with ER-2 (prob. 2016)
- Coordinated with CLARIFY and ONFIRE
- Involves 5 NASA centers, 8 universities
- Includes LES and WRF-Chem modeling and **features flight strategies to facilitate easy comparisons to global models**
- Establishes 2 new AERONET sites (St. Helena & Angola)
- Selection in late 2014

02-2,3 semi-direct + ?
03-2,3 indirect -

01-1,2 direct + or -
02-2,3 semi-direct - ?

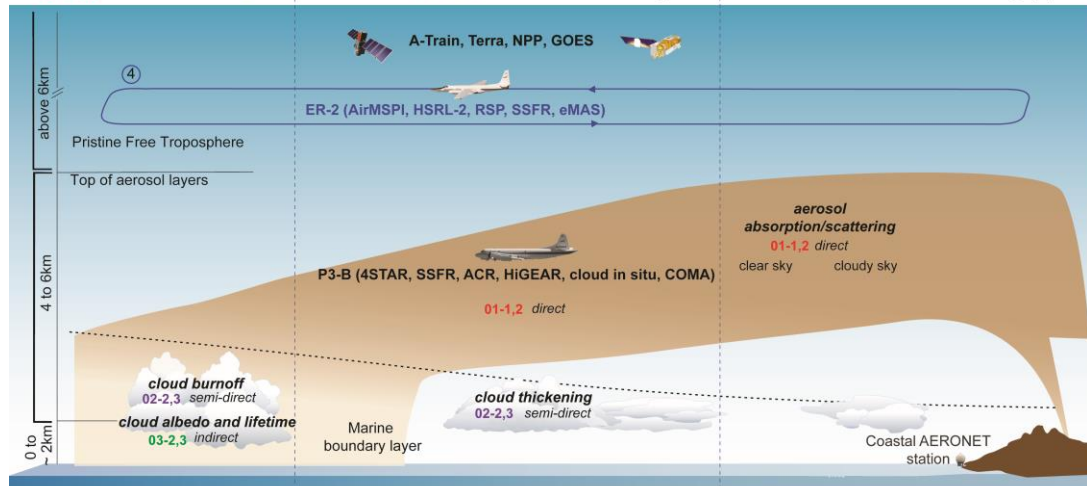
01-1,2 direct - TOA warming (+)
or cooling (-)



Instruments - NASA ER-2:
AirMSPI, HSRL-2, RSP, eMAS



Instruments - NASA P-3B:
4STAR, SSFR, HiGEAR, radar, cloud in situ



Conclusions

1. Our method uses stringently quality-screened, instantaneously collocated level 2 MODIS AOD (DT & DB), OMI AOD, and CALIOP backscatter – all input data is consistent with global pdf's of original data
2. Our aerosol retrievals agree better with AERONET in terms of SSA(441nm) than input OMI+MODIS data, BUT sampling is sparse.
3. Clear-sky $\Delta F_{\text{aerosol}}$ (TOA) over land is smaller than previous model or observational estimates due to more absorbing aerosol and inclusion of brighter surfaces. $\Delta F_{\text{aerosol}}$ (SFC) over land and $\Delta F_{\text{aerosol}}$ (TOA) over land and ocean are in between previous model and observational results.
4. Comparisons of seasonal aerosol property to AeroCom Phase 2 results show generally good agreement – best agreement with forcing results at TOA is found with GMI-MerraV3.

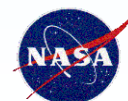
Issues with surface forcing estimates:

1. Some remaining differences in global pdf's of SSA.
2. It is impossible to validate SSA globally at this point in time.
3. Start with AERONET L2/L1.5 validation for dominant aerosol types.

Next steps:

1. Subsample AeroCom models at exact MOC retrieval locations.
2. Incorporate AAC retrievals from CALIOP DR method for extension to all-sky results.

- Goals & Motivation
- Approach
- Philosophy
- Results
 - AOD & SSA distributions
 - SSA comparison with AERONET
 - Comparisons of DARF to IPCC 2007
 - Comparisons to AeroCom Phase 2
 - Global pdf's of SSA
- Aerosol type classification
- **Conclusions**



A faint, light blue silhouette of a world map is centered in the background of the slide. The continents are clearly visible but lack detail, serving as a subtle backdrop for the text.

ADDITIONAL SLIDES



All satellite Aerosol Above Cloud (AAC) AOD techniques [Jethva et al., GRL, 2013]

Table 1. Salient Properties of the ACA Retrieval Techniques and Associated Sensors

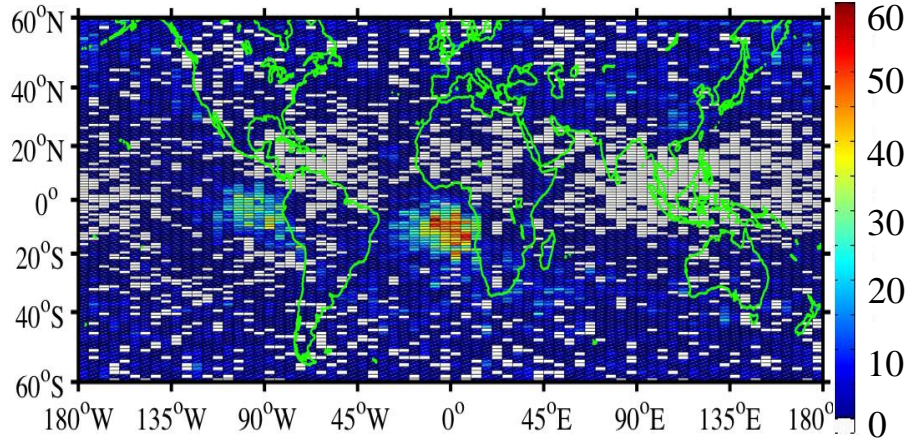
	Physical Basis	Algorithmic Assumptions	Input Parameters	Retrieved Parameters	Retrieval Uncertainty
MODIS <i>Jethva et al.</i> [2013]	Change in the reflectance and color ratio in the visible (VIS)/SWIR when absorbing aerosols overlay cloud	Aerosol/cloud size distribution, aerosol spectral extinction and absorption, aerosol/cloud profiles, and surface albedo	TOA reflectance at 470 and 860 nm at $1 \times 1 \text{ km}^2$ resolution	ACAOD and aerosol-corrected COD at 860 nm; converted to 500 nm based on the model assumed spectral extinction	Depends on ACAOD and COD. Typically between -12 and 46% at COD of 10 and AOD of 0.5 for an uncertain single-scattering albedo (SSA) of ± 0.03
CALIOP Operational Method <i>Winker et al.</i> [2009]; <i>Young and Vaughan</i> [2009]	Vertically resolved aerosol backscatter and inferred extinction profile	Extinction to backscatter ratio and feature/layer detection scheme	Attenuated backscatter profile at 532 and 1064 nm at 0.3 km scale	Vertical extinction profile, AOD at 532 and 1064 nm and at 0.3 and 5 km (level 2) scales	From <i>Winker et al.</i> [2009]: $0.05 + 0.40 \times \text{AOD}$,
CALIOP Depolarization Method <i>Hu et al.</i> [2007]	Change in the transmittance (DR) VIS/IR when absorbing aerosols overlay cloud	Cloud extinction-to-backscatter ratio at 532 nm and Rayleigh correction above cloud	Layer integrated attenuated backscatter and depolarization ratio at 532 nm	ACAOD at 532 nm	Depends on the integrated attenuated backscatter at 532 and its depolarization ratio.
CALIOP Color Ratio Method <i>Chand et al.</i> [2008]	Change in the VIS/IR transmittance when absorbing aerosols overlay cloud	Ångström Exponent (532–1064 nm) and color ratio (VIS/IR) of underlying cloud layer	Layer integrated attenuated backscatter and color ratio at 532 nm	ACAOD at 532 nm and Ångström exponent in the 532–1064 nm range	Depends on the integrated attenuated backscatter at 532 nm and 1064 nm and Ångström exponent
POLDER <i>Waquet et al.</i> [2009, 2013]	Creation of polarization at forward scattering angles. Reduction of the polarized signal in the cloudbow.	Six fine-mode spherical aerosol models with refractive index of 1.47–0.01i, one nonspherical-mineral dust model, and only one aerosol/cloud profile.	TOA polarized radiance at 670 and 865 nm at $6 \times 6 \text{ km}^2$ resolution (POLDER) and cloud droplets effective radius (MODIS)	AOD at 865 nm and Ångström exponent. The AOD is converted at 500 nm using the retrieved Ångström exponent.	Depends on AOD and microphysics. For an AOD of 0.2 (at 865 nm): AOD error of 0.05 for a real refractive index uncertainty of ± 0.06 and error of 0.02 for an imaginary refractive index uncertainty of ± 0.01
OMI <i>Torres et al.</i> [2012]	Change in the near-UV reflectance and UV aerosol index (UVAI) when absorbing aerosols overlay cloud	Aerosol/cloud size distribution, aerosol spectral extinction and absorption, aerosol/cloud profiles, and surface albedo	TOA reflectance at 388 nm and measured UVAI at $13 \times 24 \text{ km}^2$ resolution	ACAOD and aerosol-corrected COD at 388 nm; converted to 500 nm based on model assumed spectral extinction	Depends on ACAOD and COD. Typically between -23 and 43% at COD of 10 and AOD of 0.5 for an uncertain SSA of ± 0.03

CALIOP standard AAC vs HSRL

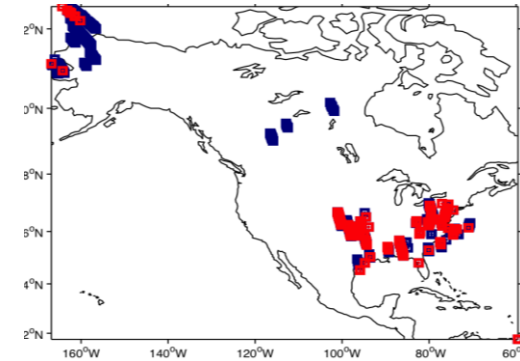
- Goals & Motivation
- Approach
- Results
 - AOD & SSA comparisons to AERONET
 - AOD and SSA distribution
 - Maps of TOA and surface DARF
 - Comparisons of DARF to previous results
 - Validity of surface forcing results
 - Global pdf's of SSA
 - Aerosol above cloud (AAC) AOD
 - Aerosol type classification
 - Conclusions

HSRL vs CALIOP AAC 86 flights 2006-09

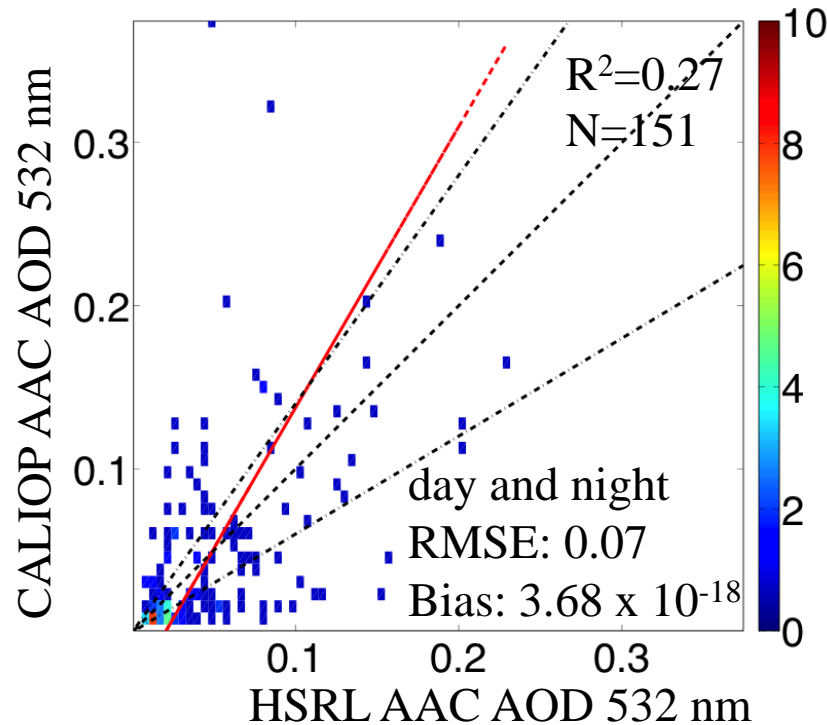
AAC count (%)



CALIOP, October 2007

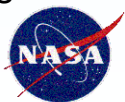
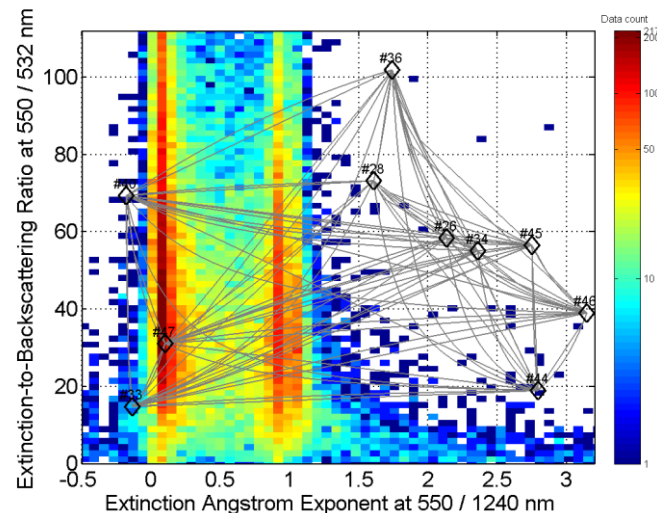
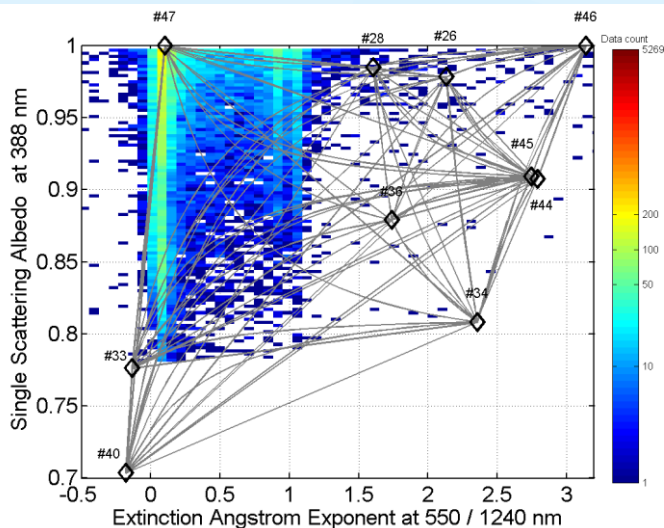
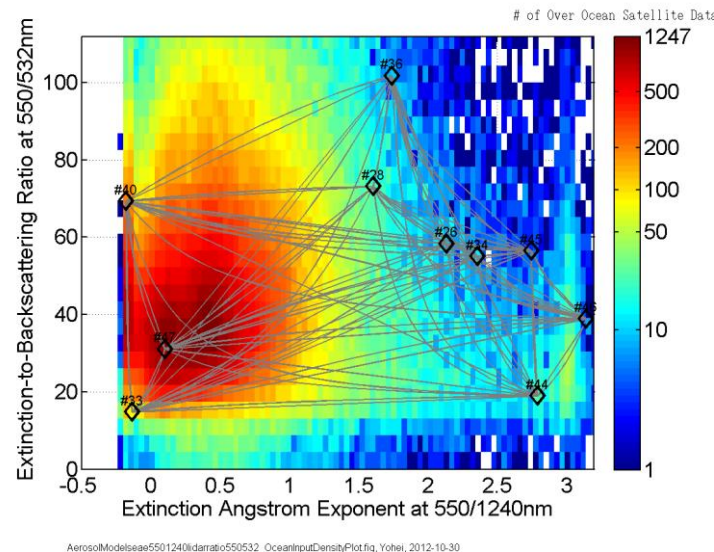
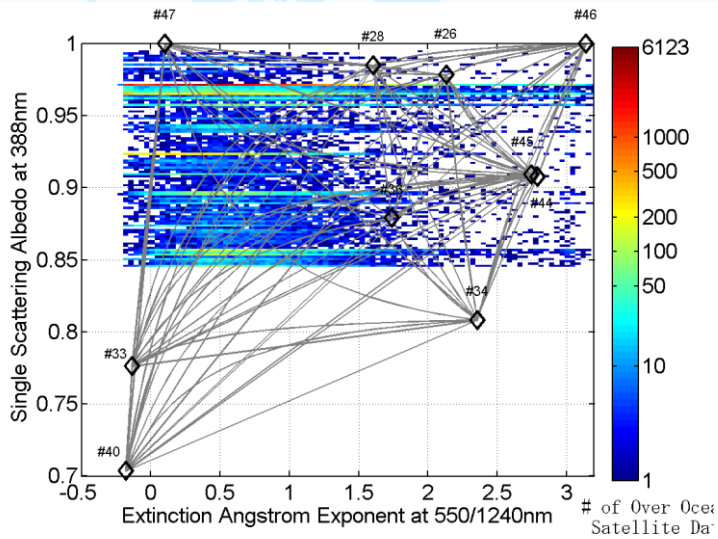


- CALIOP detects AAC in ~23% of the cases where the HSRL detects AAC
- Lack of correlation in AAC AOD; ~68% of points outside the $\pm 40\%$ envelope
- CALIOP underestimation of AAC AOD mostly due to tenuous aerosol layers under the CALIOP detection threshold



Aerosol models: Based on field observations, optimized to span observed range of SSA vs. EAE and lidar ratio vs. EAE

- Goals & Motivation
- Approach
- Technical details
- Input & Spatial sampling
- Aerosol models
- Metric
- Sample retrieval
- Representativeness of input
- Results
- AOD & SSA comparisons to AERONET
- AOD and SSA distribution
- Maps of TOA and surface DARF
- Comparisons of DARF to previous results
- Conclusions

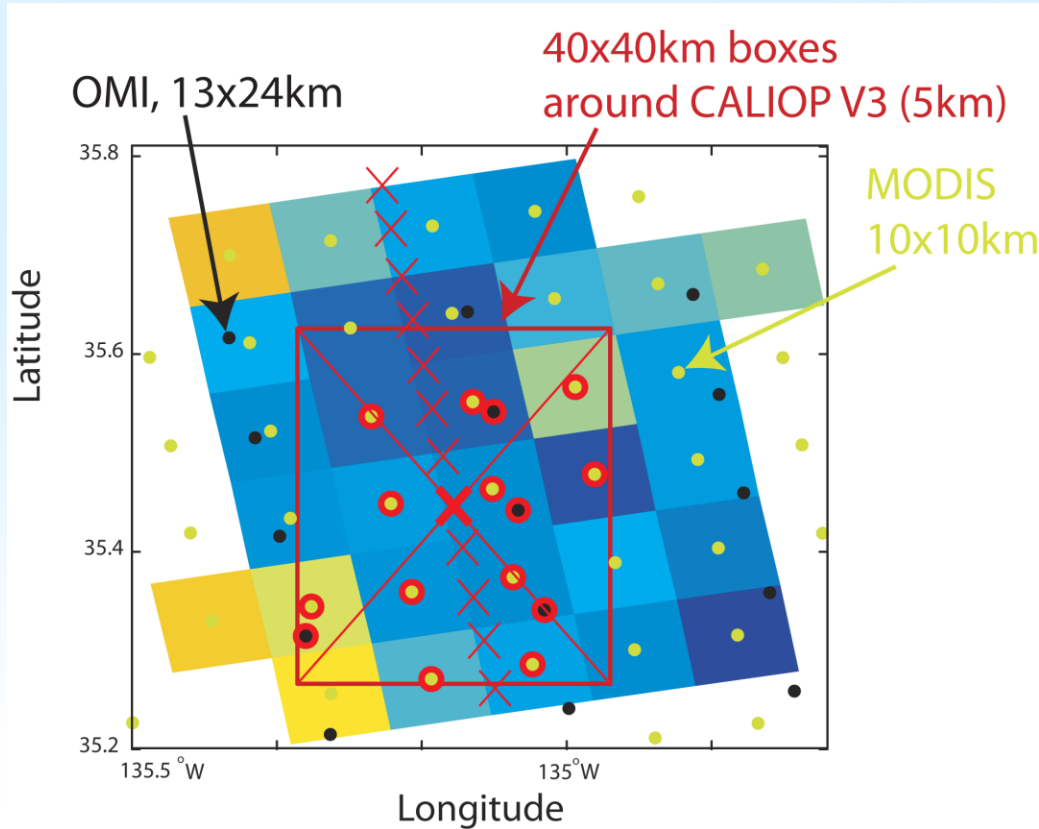


Input & Spatial Sampling

Constraints/Input:

- MODIS AOD ($7/2 \lambda$) + δ AOD
- OMI AOD (388 nm) + δ AAOD
- CALIPSO ext (532, 1064 nm) + δ ext
- CALIPSO back (532, 1064 nm) + δ back

- Goals & Motivation
- Approach
- Technical details
- **Input**
- Representativeness of input
- Sample retrieval
- Results
- AOD & SSA comparisons to AERONET
- AOD and SSA distribution
- Maps of TOA and surface DARF
- Comparisons of DARF to previous results
- Conclusions



Metric: Simple weighted cost function

$$X = \left(\sum_i w_i \left(\frac{x_i - \hat{x}_i}{\delta \hat{x}_i} \right)^2 \right)^{1/2}$$

Minimize X and select top 3% solutions with

$$|x_i - \hat{x}_i| \leq \delta \hat{x}_i$$

x_i : retrieved parameters

\hat{x}_i : observables

$\delta \hat{x}_i$: uncertainties in obs.

w_i : weighting factors

$x_i = \text{AOD } 550\text{nm } (\pm 0.03 \pm 5\%)$

$\text{AOD } 1240 \text{ nm } (\pm 0.03 \pm 5\%)$

$\text{AAOD } 388 \text{ nm } \pm (0.05 + 30\%)$

$\beta_{532} \pm (0.1 \text{ Mm}^{-1} \text{sr}^{-1} + 30\%),$

- MODIS

- OMI

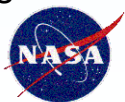
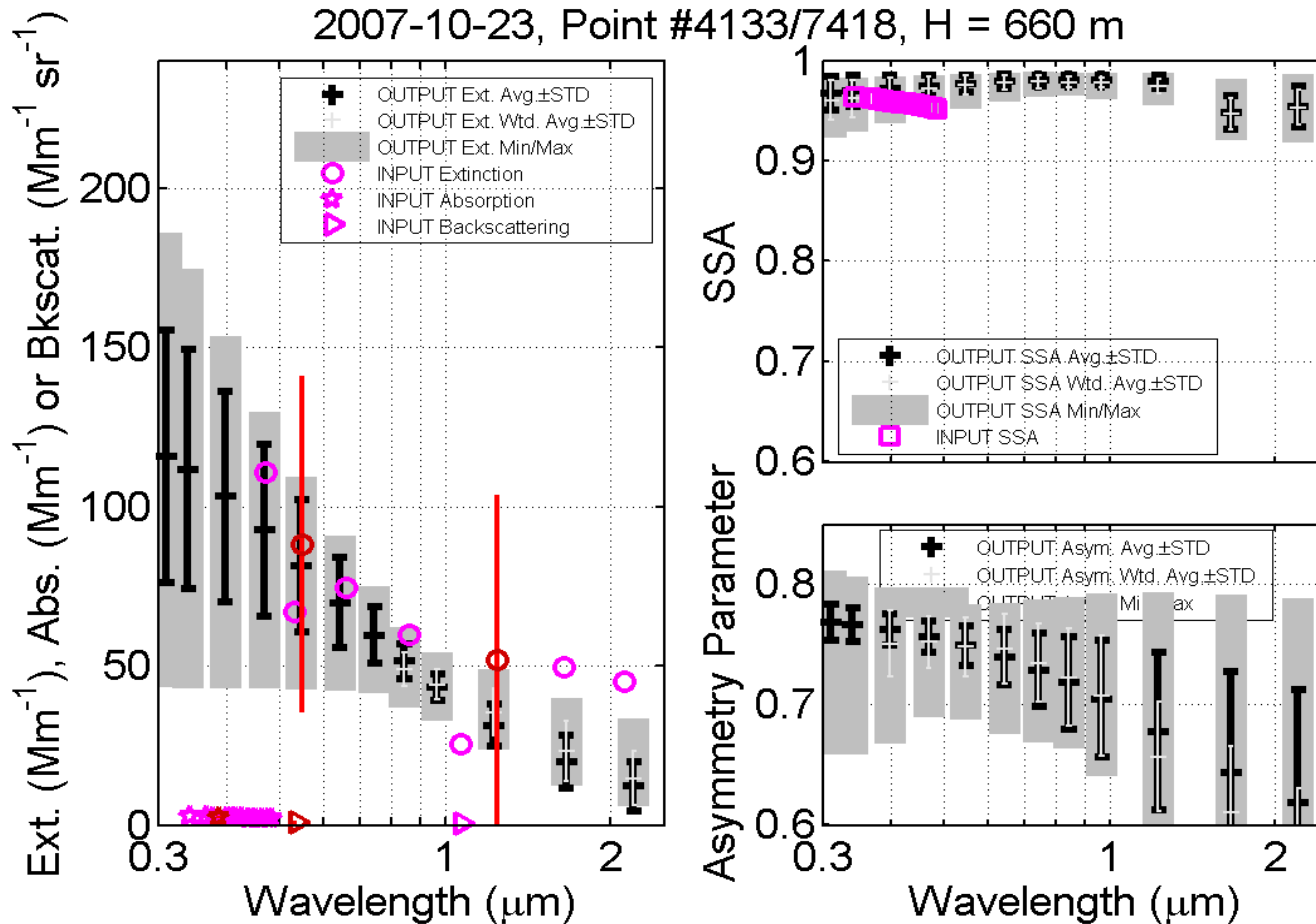
- CALIOP

- Goals & Motivation
- Approach
- Technical details
 - Input & Spatial sampling
 - Aerosol models
 - **Metric**
 - Sample retrieval
 - Representativeness of input
- Results
 - AOD & SSA comparisons to AERONET
 - AOD and SSA distribution
 - Maps of TOA and surface DARF
 - Comparisons of DARF to previous results
- Conclusions



Sample retrieval

- Goals & Motivation
- Approach
- Technical details
 - Input & Spatial sampling
 - Aerosol models
 - Metric
 - **Sample retrieval**
 - Representativeness of input
- Results
 - AOD & SSA comparisons to AERONET
 - AOD and SSA distribution
 - Maps of TOA and surface DARF
 - Comparisons of DARF to previous results
- Conclusions

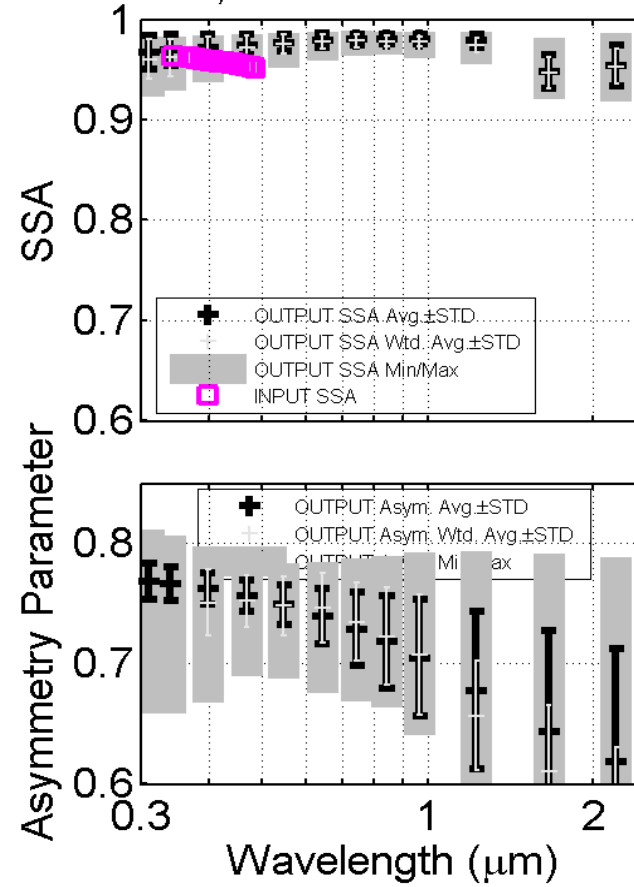
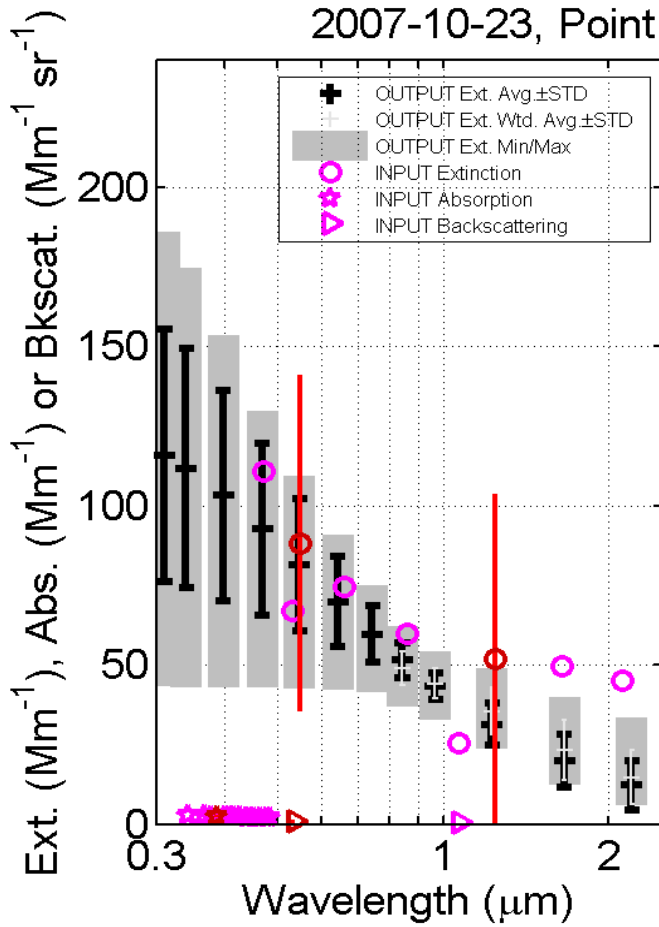


Metric: Simple weighted cost function

$$X = \left(\sum_i w_i \left(\frac{x_i - \hat{x}_i}{\delta \hat{x}_i} \right)^2 \right)^{1/2}$$

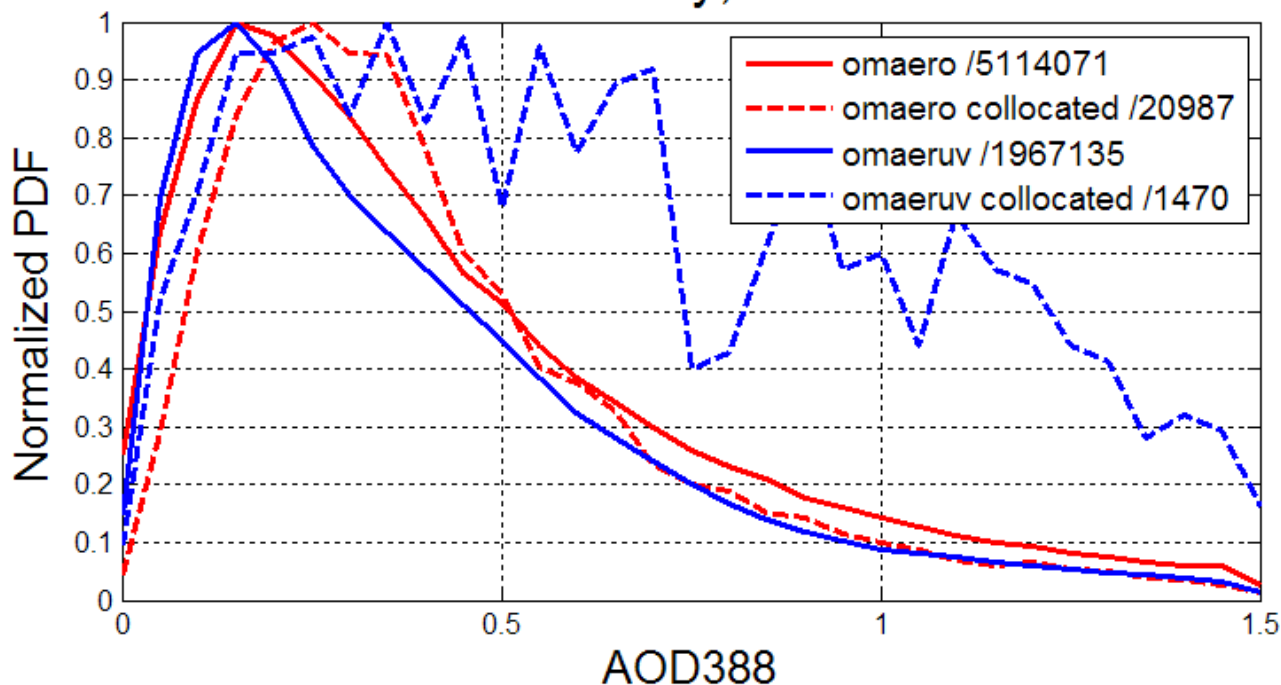
x_i : retrieved
 \hat{x}_i : observables
 $\delta \hat{x}_i$: unc. in obs.
 w_i : weighting factors

- Goals & Motivation
- Approach
- Technical details
 - Input & Spatial sampling
 - Representativeness of input
 - **Sample retrieval**
- Results
 - AOD & SSA comparisons to AERONET
 - AOD and SSA distribution
 - Maps of TOA and surface DARF
 - Comparisons of DARF to previous results
- Conclusions



Representativeness of input - 2

January, 2007



OMAERO data collocated with MODIS and CALIOP is a reasonable representation of global OMAERO over ocean

OMAERUV data collocated with MODIS and CALIOP is a poor representation of global OMAERUV over ocean

- Goals & Motivation
- Approach
- Technical details
- Input & Spatial sampling
- **Representativeness of input**
- Sample retrieval
- Results
- AOD & SSA comparisons to AERONET
- AOD and SSA distribution
- Maps of TOA and surface DARF
- Comparisons of DARF to previous results
- Conclusions