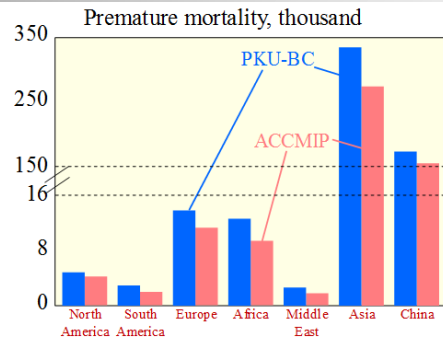
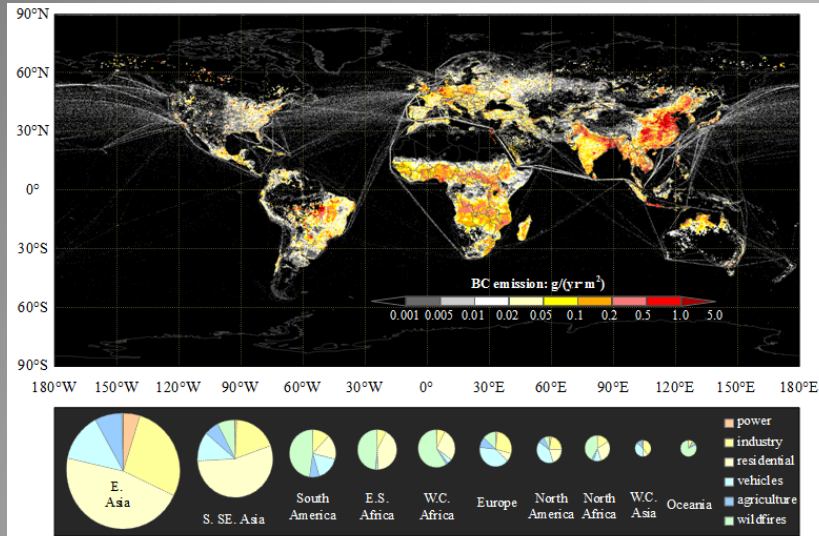
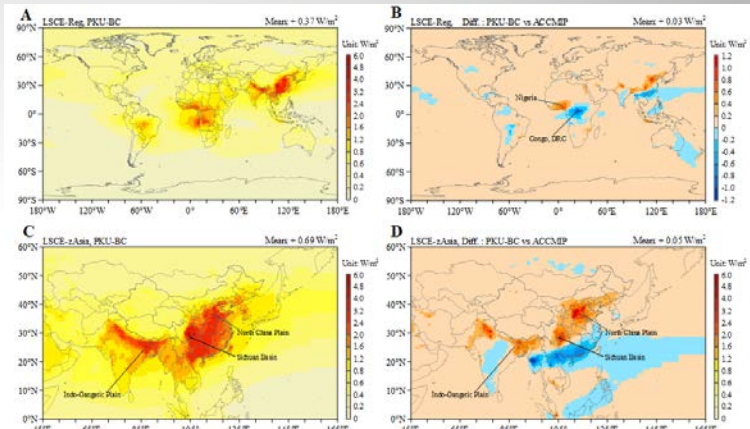
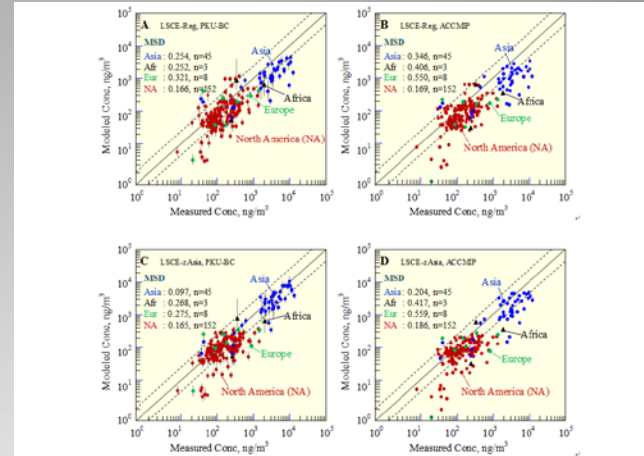


# Development of a new global black carbon emission inventory (PKU-BC), and the implication on modeling and impact on climate and health.

Rong Wang, Shu Tao, Yves Balkanski, Philippe Ciais, Huizhong Shen, Ye Huang, Raffaella Vuolo



**Fig. 3.** Comparison of estimated health impact due to cardiopulmonary and lung cancer deaths in the exposure of population to BC based on the PKU-BC and ACCMIP inventory.



**Fig. 4.** All-sky direct radiative forcing (RF) of BC at TOA. (A) RF by LSCE-Reg model based on the PKU-BC inventory; (B) Difference of RF between the PKU-BC and ACCMIP inventory by LSCE-Reg model; (C) RF by LSCE-Reg model based on the ACCMIP inventory; (D) Difference of RF between the PKU-BC and ACCMIP inventory by LSCE-zAsia model.